



TBOSS-TELE-LEG INSTALL GUIDE

Installation of TBOSS-TELE-LEG (Rear Supports for HD Applications)

The TRUCKBOSS TELE-LEG KIT permits the user to pre-load the support leg and provide additional support carrying weight on the deck.

The TBOSS-TELE-LEG is unobtrusive and does not encroach into any cargo space. It can be installed during or after any TRUCKBOSS Deck installation.

The TBOSS-TELE-LEG is only required at the rear of the deck; however an additional kit can also be installed at the front.



Your TBOSS-TELE-LEG Kit will contain the following parts for 2 leg assemblies:

TBOSS-TELE-LEG KIT

2X	RAIL-ANGLE BRACKET
2X	16.875" LEG
2X	LEG SUPPORT ANGLE
2X	LEG BASE PLATE
20X	5/16 X 0.75 CARRIAGE BOLT
4X	5/16 X 6.0 CARRIAGE BOLT
28X	5/16 SERRATED FLANGE NUT
4X	5/16 NUT
4X	5/16 LOCK WASHER
4X	TEK SCREWS

ASSEMBLE EACH OF THE TBOSS-TELE-LEGS IN THE FOLLOWING MANNER:

The LEG BASE PLATE needs to rest on a solid surface; spray-in liners or wooden liners are acceptable—plastic liners are not. If a plastic liner is present, install LEG Kit then remove portion of plastic liner from underneath foot.

1. Insert 6.0” CARRIAGE BOLTS (2X) into 2 adjacent holes in the LEG BASE PLATE. Thread SERRATED FLANGE NUTS (2X) onto bolts and tighten.



2. Install a NUT, LOCK WASHER, and SERRATED FLANGE NUT (note orientation) onto each 6.0” CARRIAGE BOLT:

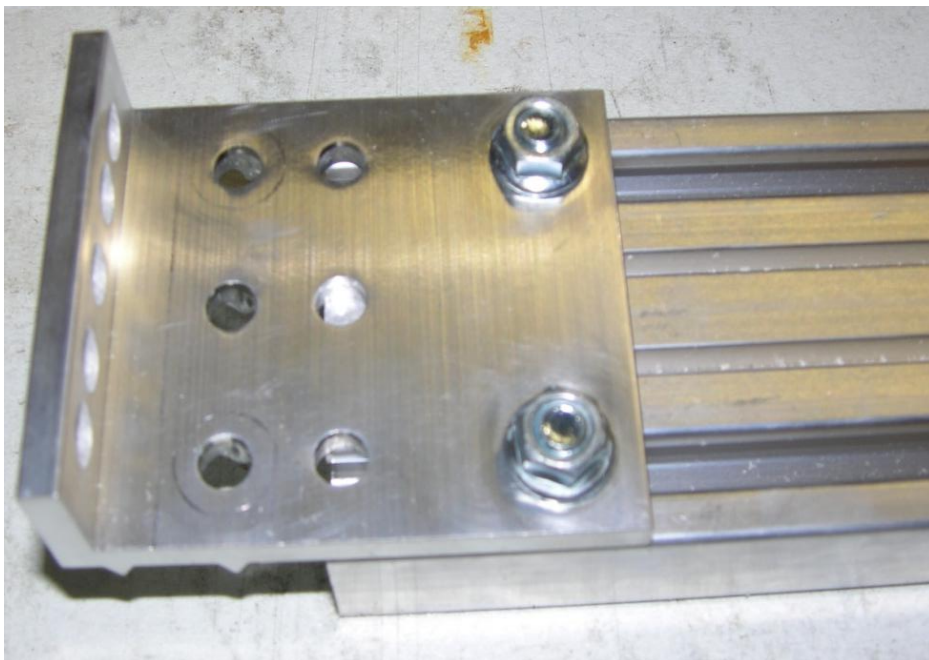


- Using 0.75" CARRIAGE BOLTS (4X) and SERRATED FLANGE NUTS (4X) loosely mount the LEG SUPPORT ANGLE to the 16.875" LEG.

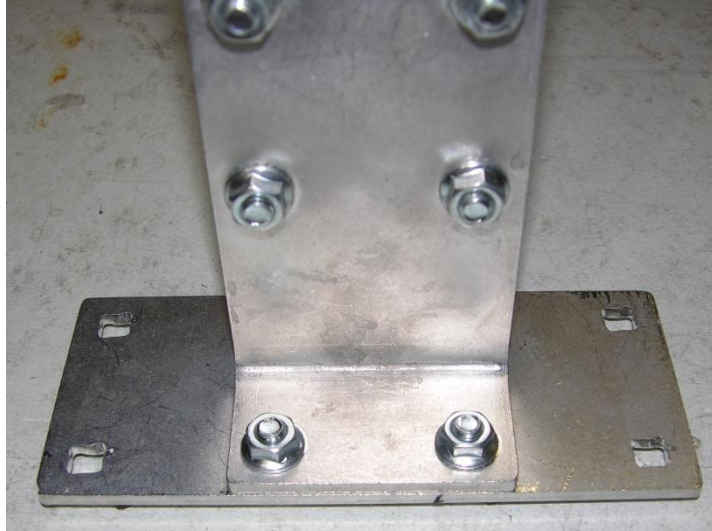


Use the lower 4 of the available 6 holes for install in Ford Super Duty, Dodge, pre-2008 GMC/Chev or wood box-liner equipped trucks. Use the upper 4 of the available 6 holes for Ford F-Series, post-2008 GMC/Chev, or Toyota trucks.

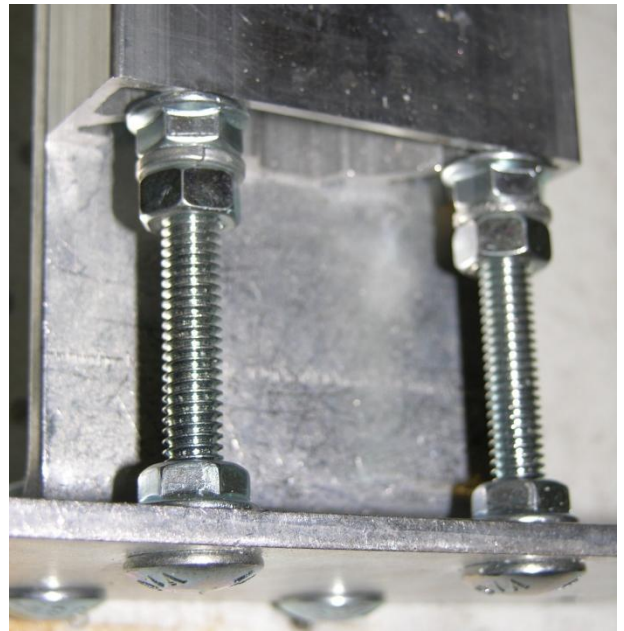
- Using 0.75" CARRIAGE BOLTS (2X) loosely mount the RAIL ANGLE BRACKET to the 16.875" LEG:



5. Mount the LEG SUPPORT ANGLE onto the LEG BASE PLATE as shown using 0.75" CARRIAGE BOLTS (2X) and SERRATED FLANGE NUTS (2X). Do not tighten
Note: 6.0" CARRIAGE BOLTS should be inserted into LEG as shown in REAR VIEW:

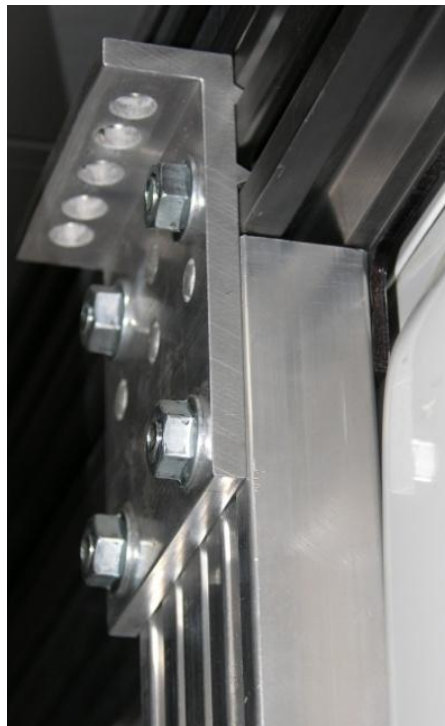


FRONT VIEW

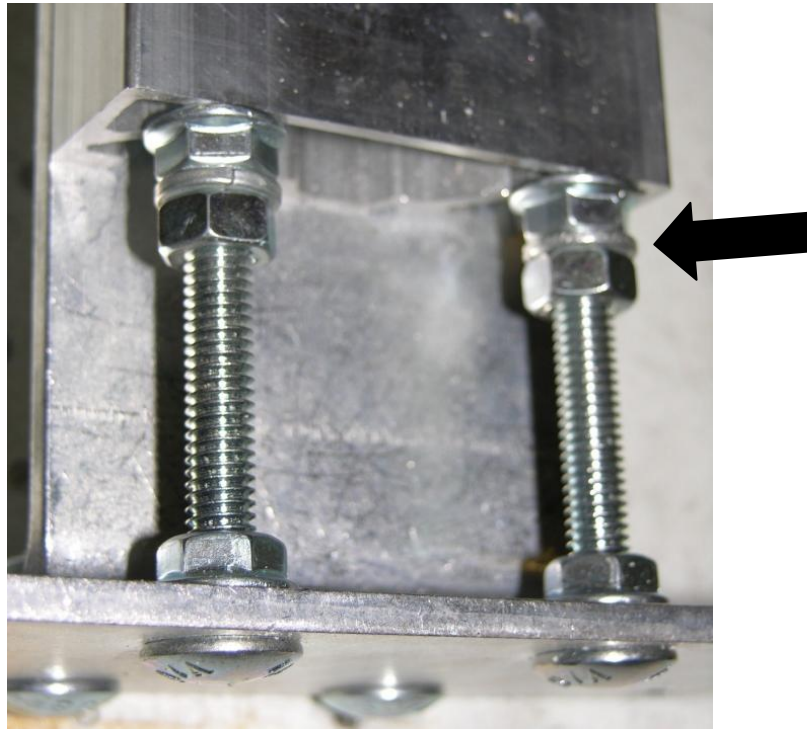


REAR VIEW

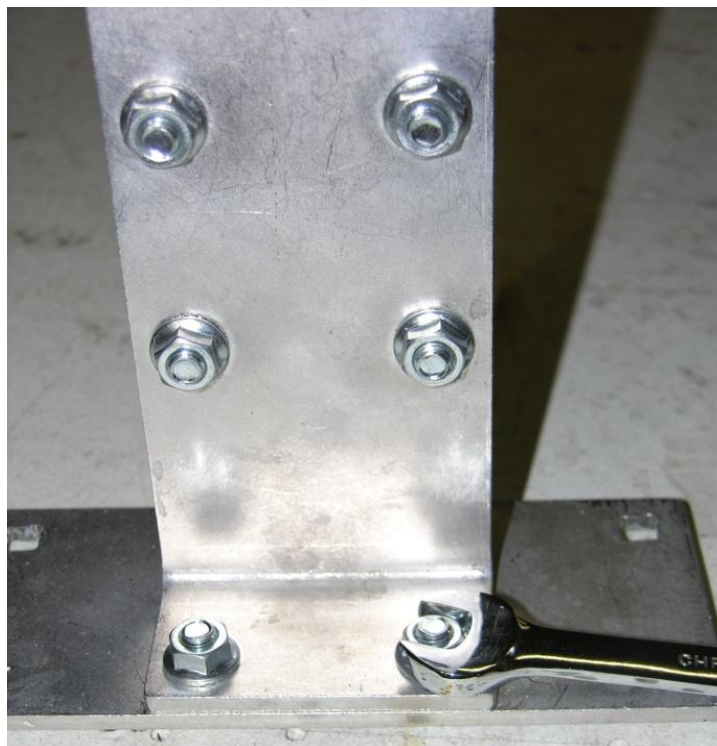
6. Slide (2X) Carriage Head Bolts into the RAIL-CAPTURE near the top of truck's tailgate. Install RAIL-ANGLE BRACKET onto carriage head bolts. Adjust LEG so that it sits directly underneath RAIL-CAPTURE. Tighten all 4 SERRATED FLANGE NUTS on RAIL-ANGLE BRACKET once LEG is positioned:



7. The leg assembly is now in place. Adjust the “upside down” SERRATED FLANGE NUTS (2X) until adequate force is being applied to the leg assembly (leg assembly is intended to bear a portion of the weight from the deck). Once adjustment is complete use NUTS and LOCK WASHERS to jam SERRATED FLANGE NUTS.



8. Once adjustment is complete tighten all 6 SERRATED FLANGE NUTS on LEG SUPPORT ANGLE, locking adjustment in place. Use (2X) self tapping TEK screws to fasten LEG BASE PLATE to bed:



9. Check all nuts/bolts on a monthly basis. To adjust the force that the TBOSS-TELE-LEG applies; loosen SERRATED FLANGE NUTS (6X) from step 8, loosen jam NUT (2x) from step 7, and adjust “upside down” SERRATED FLANGE NUTS. Ensure to re-set jam NUT and tighten SERRATED FLANGE NUTS (6X).



TOLL FREE: 866-440-6800
www.TRUCKBOSSdecks.com